

Test Report

No.: CANEC24007499103

Date: Apr 29, 2024

Page 1 of 32

Client Name: HUA TIAN TECHNOLOGY(XI'AN) CO.,LTD

Client Address: NO. 105, 5TH FENGCHENG ROAD, ECONOMIC AND TECHNOLOGICAL DEVELOPMENT ZONE, XI'AN, SHAANXI PROVINCE, 710018, CHINA

Sample Name: QFN(0505*0.75-0.40)040

Model No.: BAT32G135GE40NB

Client Ref. Information: SEE ATTCHMENT

The above sample(s) and information were provided by the client.

SGS Job No.: GZP24-011695

Sample Receiving Date: Apr 16, 2024

Testing Period: Apr 16, 2024 ~ Apr 23, 2024

Test Requested: Select test(s) as requested by the client.

Test Method(s): Please refer to next page(s).

Test Result(s): Please refer to next page(s).

Test Requirement	Conclusion
EU RoHS Directive (EU) 2015/863 amending Annex II to Directive 2011/65/EU - Lead, Mercury, Cadmium, Hexavalent chromium, Polybrominated biphenyls (PBB), Polybrominated diphenyl ethers (PBDE), Bis(2-ethylhexyl) phthalate (DEHP), Butyl benzyl phthalate (BBP), Dibutyl phthalate (DBP) and Diisobutyl phthalate (DIBP)	Pass
Tetrabromobisphenol A (TBBP-A)	See Results
Alkanes C14-C17, chloro (medium- chain chlorinated paraffins) (MCCPs)	See Results

Signed for and on behalf of
SGS-CSTC Standards Technical Services Co., Ltd. Guangzhou Branch

Allie Chen

Allie Chen
Approved Signatory



Test Report

No.: CANEC24007499103

Date: Apr 29, 2024

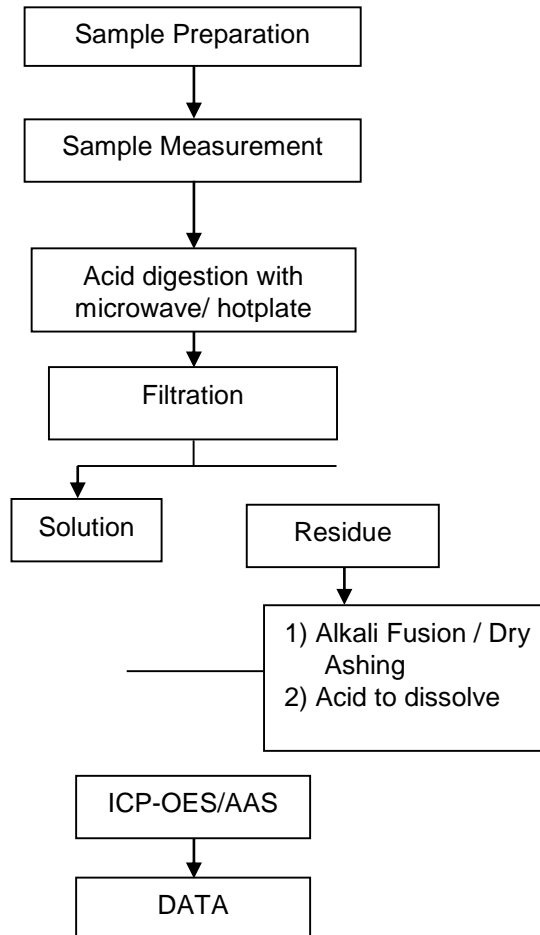
Page 2 of 32

Test Result(s):

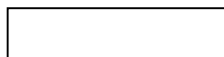
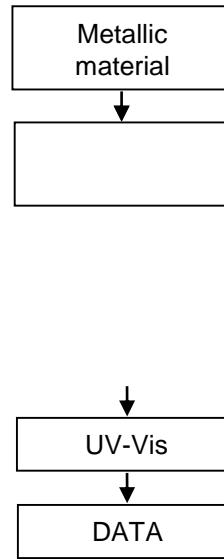
Test Part Description

Elements Testing Flow Chart

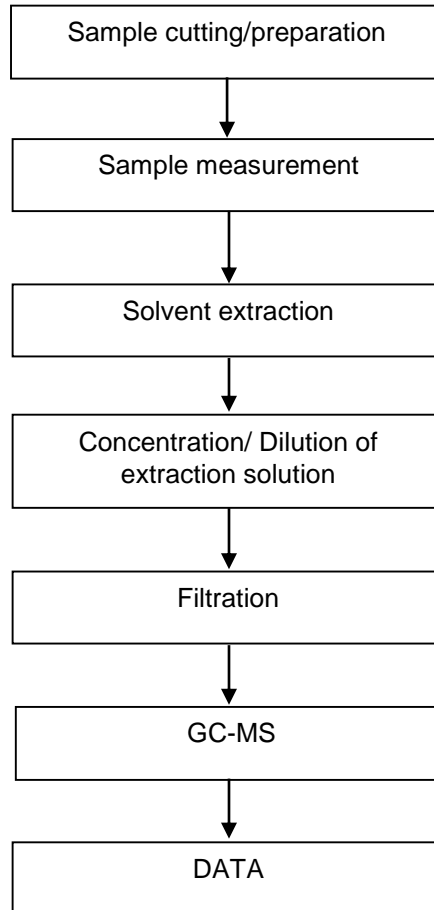
These samples were dissolved totally by pre-conditioning method according to below flow chart.



Hexavalent Chromium (Cr(VI)) Testing Flow Chart



PBB/PBDE Testing Flow Chart



Test Report

No.: CANEC24007499103

Date: Apr 29, 2024

Test Report

No.: CANEC24007499103

Date: Apr 29, 2024

Page 9 of 32

Test Report

No.:

Test Report

No.: CANEC24007499103

Date: Apr 29, 2024

Page 12 of 32

DFN(0202*0.75-0.65)006-SS2

DFN(2.01.5*0.90-0.90)003(A)

QFN(0404*0.55-0.50)028(A)

DFN(0202*0.75-0.675)005(A)-SD2

DFN(2.02.5*0.55-0.50)008(A)

QFN(0404*0.75-0.40)028

DFN(0202*0.85-0.40)010(A)

DFN(2.11.8*0.55-0.40)010(A)

QFN(0404*0.75-0.40)028(B)

DFN(0202*0.85-0.40)010(B)

DFN(2.41.5*0.45-0.40)012

QFN(0404*0.75-0.40)028(B)-SD2

DFN(0202*0.85-0.50)008(B)

DFN(2.41.5*0.50-0.40)012

Test Report

No.: CANEC24007499103

Date: Apr 29, 2024

Page 15 of 32

DFN(0303*0.75-0.65)008-SS2	FCDFN(1.00.6*0.40-0.65)002(A)	QFN(0404*0.85-0.40)032-SD3
DFN(0303*0.75-0.65)008-SS3	FCDFN(1.00.6*0.55-0.65)002(B)	QFN(0404*0.85-0.50)020
DFN(0303*0.75-0.65)008-SS4	FCDFN(1.10.7*0.50-0.40)006(A)	QFN(0404*0.85-0.50)020(D)
DFN(0303*0.75-0.65)008-WET	FCDFN(1.30.8*0.40-0.45)006(A)	QFN(0404*0.85-0.50)020(D)-SD3
DFN(0303*0.75-0.95)005(A)	FCDFN(1.51.5*0.75-0.50)006(A)	QFN(0404*0.85-0.50)020(D)-SS2
DFN(0303*0.75-0.95)006(A)	FCDFN(1.601.35*0.75-0.50)006(A)	QFN(0404*0.85-0.50)020(E)
DFN(0303*0.75-0.95)006(B)	FCDFN(1.61.6*0.55-0.50)006(A)	QFN(0404*0.85-0.50)020(E)-SD2
DFN(0303*0.75-0.65)008-SS3	FCDFN(2.01.5*0.85-0.50)008(A)	QFN(0404*0.85-0.50)020-SD2
DFN(0303*0.75-2.415)002	FCDFN(2.52.0*0.85-0.40)010(A)	QFN(0404*0.85-0.50)020-SS2
DFN(0303*0.85-0.40)014(A)-SD2	FCQFN(0202*0.55-0.45)012(A)	QFN(0404*0.85-0.50)020-SS3
DFN(0303*0.85-0.45)012	FCQFN(0202*0.75-0.40)016	QFN(0404*0.85-0.50)023(A)-SS3
DFN(0303*0.85-0.45)012-SD2	FCQFN(0202*0.85-0.40)012(A)	QFN(0404*0.85-0.50)024
DFN(0303*0.85-0.50)010	FCQFN(0202*0.85-0.50)011	QFN(0404*0.85-0.50)024(B)
DFN(0303*0.85-0.50)010(D)	FCQFN(0202*0.85-0.50)012	QFN(0404*0.85-0.50)024(C)
DFN(0303*0.85-0.50)010-SS2	FCQFN(0202*0.85-0.50)012(B)	QFN(0404*0.85-0.50)024(C)-SD2
DFN(0303*0.85-0.50)012(B)	FCQFN(0203*0.75-0.50)012(B)	QFN(0404*0.85-0.50)024(C)-SS2
DFN(0303*0.85-0.65)008	FCQFN(0203*0.85-0.40)015(A)	QFN(0404*0.85-0.50)024(D)
DFN(0303*0.85-0.65)008(D)	FCQFN(0203*0.85-0.40)016(A)	QFN(0404*0.85-0.50)024(E)
DFN(0303*0.85-0.825)006(A)	FCQFN(0203*0.85-0.40)018(A)	QFN(0404*0.85-0.50)024(F)
DFN(0303*0.90-0.50)010	FCQFN(0203*0.85-	

Test Report

No.: CANEC24007499103

Date: Apr 29, 2024

Page 16 of 32

DFN(0403*0.55-0.80)008	FCQFN(0303*0.75-0.45)020(E)	QFN(0404*0.90-0.50)024(D)-SS2
DFN(0403*0.55-0.80)008(B)	FCQFN(0303*0.75-0.50)015(A)	QFN(0404*0.90-0.50)024(F)
DFN(0403*0.75-0.50)012(A)	FCQFN(0303*0.75-0.50)016(H)	QFN(0404*0.90-0.50)024(K)
DFN(0403*0.75-0.50)012(A)-SS2	FCQFN(0303*0.75-0.50)016(I)	QFN(0404*0.90-0.50)024-SD2
DFN(0403*0.75-0.50)014	FCQFN(0303*0.75-0.50)018(A)	QFN(0404*0.90-0.65)016(D)
DFN(0403*0.75-0.50)014(B)	FCQFN(0303*0.85-0.40)016	QFN(0404*1.15-0.40)028-SD3
DFN(0403*0.75-0.50)014-SS2	FCQFN(0303*0.85-0.40)016(B)	QFN(0404*1.15-0.40)032(B)-SIP
DFN(0403*0.85-0.50)014(B)	FCQFN(0303*0.85-0.40)016(C)	QFN(0404*1.15-0.40)032(F)-SD3
DFN(0403*0.85-0.50)014-SS2	FCQFN(0303*0.85-0.40)016(D)	QFN(0404*1.15-0.40)032(F)-SIP
DFN(0404*0.45-0.80)008(A)	FCQFN(0303*0.85-0.40)019(A)	QFN(0405*0.75-0.30)048(A)
DFN(0404*0.50-0.80)008(A)	FCQFN(0303*0.85-0.40)019(C)	QFN(0405*0.75-0.30)048(A)-SD2
DFN(0404*0.50-0.80)008(A)-SS2	FCQFN(0303*0.85-0.40)021(A)	QFN(0405*0.75-0.30)048(A)-SIP
DFN(0404*0.55-0.80)008(A)	FCQFN(0303*0.85-0.45)016(A)	QFN(0405*0.75-0.35)042(A)-SD2
DFN(0404*0.75-0.40)020(A)	FCQFN(0303*0.85-0.45)016(D)	QFN(0405*0.75-0.40)036(A)-SS2
DFN(0404*0.75-0.40)020(A)-SIP	FCQFN(0303*0.85-0.50)014(A)	QFN(0405*0.75-0.50)020(A)
DFN(0404*0.75-0.40)020(A)-SS3	FCQFN(0303*0.85-0.50)016	QFN(0405*0.75-0.50)024(A)
DFN(0404*0.75-0.50)016(A)	FCQFN(0303*0.85-0.50)016(B)	QFN(0405*0.75-0.50)024(B)
DFN(0404*0.75-0.65)008(B)	FCQFN(0303*0.85-0.50)016(C)	QFN(0405*0.75-0.50)028
DFN(0404*0.75-0.65)008-SS2	FCQFN(0303*0.85-0.50)016(D)	QFN(0405*0.90-0.35)042(A)-SD3
DFN(0404*0.75-0.80)008(B)	FCQFN(0303*0.85-0.50)016(F)	QFN(0405*0.90-0.50)024(B)
DFN(0404*0.75-0.80)010(A)	FCQFN(0303*0.85-0.50)017 A	QFN(0406*0.55-0.30)056(B)
DFN(0404*0.75-0.80)010(A)-SS3	FCQFN(0304*0.55-0.60)014-WET	QFN(0406*0.55-0.30)056(B)-SS2
DFN(0404*0.75-0.95)006(A)	FCQFN(0304*0.75-0.40)015(A)	QFN(0406*0.75-0.30)056(A)
DFN(0404*0.75-0.95)006(A)-SS2	FCQFN(0304*0.75-0.40)021(B)	QFN(0406*0.75-0.30)056(A)-SD2
DFN(0404*0.75-1.00)008(B)-SS3	FCQFN(0304*0.75-0.40)021(C)	QFN(0406*0.75-0.30)056 A)-SIP
DFN(0404*0.75-1.00)008(B)-SS4	FCQFN(0304*0.75-0.40)021(D)	QFN(0406*0.75-0.30)056(A)-SS2
DFN(0404*0.75-1.00)008(B)-SS6	FCQFN(0304*0.75-0.45)013(A)	QFN(0406*0.75-0.30)056 A)-SS2
DFN(0404*0.75-1.27)006(A)	FCQFN(0304*0.75-0.45)013(B)	QFN(0406*0.75-0.35)048(A)-SD2
DFN(0404*0.75-1.27)006(A)-SS2	FCQFN(0304*0.75-0.45)016(A)	QFN(0406*0.75-0.40)038(A)-SS2
DFN(0404*0.85-0.50)016(A)	FCQFN(0304*0.75-0.50)019(B)	QFN(0406*0.75-0.50)030(A)
DFN(0404*0.85-0.80)008(A)	FCQFN(0304*0.85-0.40)019(A)	QFN(0406*0.85-0.30)056(A)
DFN(0404*0.85-0.80)008(A)-SS2	FCQFN(0304*0.85-0.40)021(A)	QFN(0406*0.85-0.30)056(A)-SD2
DFN(0404*0.85-0.80)008(B)	FCQFN(0304*0.85-0.40)026(A)	QFN(0406*0.85-0.30)056 A)-SIP
DFN(0404*0.85-0.80)008(C)	FCQFN(0304*0.85-0.45)017 A	QFN(0406*0.85-0.40)035(A)-SS2
DFN(0404*0.85-0.80)008(C)-SD2	FCQFN(0304*0.85-0.50)013(A)	QFN(0406*0.85-0.40)038(B)-SS2
DFN(0404*0.85-0.80)010(A)	FCQFN(0304*0.85-0.50)014(A)	QFN(0406*0.90-0.30)056(A)-SD3
DFN(0404*0.85-0.95)006(A)	FCQFN(0304*0.85-0.50)017	QFN(0406*0.90-0.30)056(A)-SIP
DFN(0405*0.75-1.00)008(A)	FCQFN(0304*0.85-0.50)018(A)	QFN(0406*0.90-0.35)048(A)-SD2
DFN(043.5*0.75-0.50)016	FCQFN(0304*0.85-0.50)019(A)	QFN(0406*1.15-0.30)00A(56)-SD4
DFN(043.5*0.75-0.50)016-SS2	FCQFN(0304*0.85-0.50)022	QFN(0504*0.75-0.50)028(A)

Test Report

No.: CANEC24007499103

Date: Apr 29, 2024

Page 17 of 32

DFN(0504*0.75-0.50)014	FCQFN(0304*0.85-0.50)022(A)	QFN(0504*0.75-0.50)028(A)-SS2
DFN(0504*0.75-0.50)016(A)	FCQFN(0305*0.75-0.40)021(A)	QFN(0504*0.85-0.35)044(A)-SD2
DFN(0504*0.75-0.75)014(A)	FCQFN(0404*0.55-0.40)032(C)	QFN(0504*0.85-0.50)028(A)-SS2
DFN(0504*0.75-0.80)012-SS2	FCQFN(0404*0.55-0.40)032(D)	QFN(0505*0.50-0.35)048(C)
DFN(0504*0.75-0.80)012-SS3	FCQFN(0404*0.75-0.40)015(A)	QFN(0505*0.55-0.30)056(A)
DFN(0504*0.85-0.50)016(A)-SD2	FCQFN(0404*0.75-0.40)021(A)	QFN(0505*0.55-0.30)056(A)-SS2
DFN(0504*0.85-1.27)008(A)-SD2	FCQFN(0404*0.75-0.40)021(B)	QFN(0505*0.55-0.35)048
DFN(0504*0.85-1.27)008(A)-SS2	FCQFN(0404*0.75-0.40)028(C)	QFN(0505*0.55-0.35)048(B)
DFN(0505*0.75-0.50)016	FCQFN(0404*0.75-0.40)028(D)	QFN(0505*0.55-0.35)048(B)-SS2
DFN(0505*0.75-0.50)016-SS2	FCQFN(0404*0.75-0.40)032(A)	QFN(0505*0.55-0.35)048-SD2
DFN(0505*0.75-0.50)016-SS4	FCQFN(0404*0.75-0.40)032(B)	QFN(0505*0.55-0.35)048-SS2
DFN(0505*0.75-0.50)016-WET	FCQFN(0404*0.75-0.45)025(A)	QFN(0505*0.55-0.35)048-SS3
DFN(0505*0.75		

Test Report

Test Report

No.: CANEC24007499103

Date: Apr 29, 2024

Page 19 of 32

DFN(0808*0.90-1.50)010(A)-SIP	QFN(0202*0.55-0.40)016(B)	QFN(0505*0.75-0.50)032(J)
DFN(0808*0.90-2.00)008(A)	QFN(0202*0.55-0.50)012(A)	QFN(0505*0.75-0.50)032(M)
DFN(0808*1.10-2.00)008(A)	QFN(0202*0.55-0.50)012(B)	QFN(0505*0.75-0.50)032(M)-SD2
DFN(0808*1.10-2.00)008(A)-SD2	QFN(0202*0.55-0.50)012(C)	QFN(0505*0.75-0.50)032(N)-SS3
DFN(0808*1.10-2.00)008(A)-SIP	QFN(0202*0.55-0.50)012(D)	QFN(0505*0.75-0.50)032(P)-WET
DFN(0808*1.10-4.75)003(A)	QFN(0202*0.55-0.50)012(E)	QFN(0505*0.75-0.50)032(Q)-WET
DFN(0808*1.10-4.75)003(A)-SIP	QFN(0202*0.75-0.50)010(B)	QFN(0505*0.75-0.50)032(R)-WET
DFN(0808*1.10-4.75)003(A)-SS2	QFN(0202*0.85-0.40)012(B)	QFN(0505*0.75-0.50)032-SD2
DFN(1.00.5*0.30-0.75)004(A)	QFN(0202*0.85-0.50)009(A)	QFN(0505*0.75-0.50)032-SIP
DFN(1.00.6*0.40-0.65)002	QFN(0203*0.85-0.40)016(A)	QFN(0505*0.75-0.50)032-SS2
DFN(1.00.6*0.40-0.65)002(B)-SS2	QFN(0302*0.75-0.50)012(A)	QFN(0505*0.75-0.50)032-SS3
DFN(1.00.6*0.40-0.65)002(C)-SS2	QFN(0303*0.40-0.30)028(A)	QFN(0505*0.75-0.50)032-SS4
DFN(1.00.6*0.40-0.65)002(D)	QFN(0303*0.40-0.40)020(A)	QFN(0505*0.75-0.50)032-WET
DFN(1.00.6*0.40-0.65)002-SS2	QFN(0303*0.40-0.40)024(B)	QFN(0505*0.75-0.50)-SIP032
DFN(1.00.6*0.45-0.65)002	QFN(0303*0.40-0.50)016(A)	QFN(0505*0.75-0.65)020
DFN(1.00.6*0.47-0.65)003	QFN(0303*0.40-0.50)016(A)-SS2	QFN(0505*0.75-0.65)020(B)
DFN(1.00.6*0.50-0.65)002	QFN(0303*0.45-0.80)012(A)	QFN(0505*0.75-0.65)020(C)
DFN(1.00.6*0.50-0.65)002(B)	QFN(0303*0.50-0.40)020(B)	QFN(0505*0.75-0.65)020-SS2
DFN(1.00.6*0.50-0.65)002(B)-SS2	QFN(0303*0.50-0.40)020(B)-WET	QFN(0505*0.75-0.65)020-SS7
DFN(1.00.6*0.50-0.65)002(E)	QFN(0303*0.50-0.40)024(B)	QFN(0505*0.75-0.65)024(A)
DFN(1.00.6*0.50-0.65)002(E)-SS2		

Test Report

No.: CANEC24007499103

Date: Apr 29, 2024

Page 20 of 32

DFN(1.21.0*0.45-0.40)006(A)	QFN(0303*0.55-0.50)020(C)	QFN(0505*0.85-0.35)048(E)
DFN(1.21.2*0.37-0.40)006(B)	QFN(0303*0.75-0.40)020	QFN(0505*0.85-0.35)048-SD2
DFN(1.21.2*0.37-0.40)006(C)	QFN(0303*0.75-0.40)020(C)	QFN(0505*0.85-0.35)048-SIP
DFN(1.21.2*0.37-0.40)006(D)	QFN(0303*0.75-0.40)020(C)-SD2	QFN(0505*0.85-0.35)048-SS2
DFN(1.21.2*0.40-0.40)006(A)	QFN(0303*0.75-0.40)020(C)-SS2	QFN(0505*0.85-0.40)032-SD2
DFN(1.21.2*0.40-0.40)006(B)	QFN(0303*0.75-0.40)020-SD2	QFN(0505*0.85-0.40)036(A)
DFN(1.21.2*0.40-0.40)006(C)	QFN(0303*0.75-0.40)020-SS2	QFN(0505*0.85-0.40)040
DFN(1.21.2*0.40-0.80)004(A)	QFN(0303*0.75-0.40)020-SS3	QFN(0505*0.85-0.40)040(B)
DFN(1.21.2*0.50-0.40)006(C)	QFN(0303*0.75-0.40)020-WET	QFN(0505*0.85-0.40)040(B)-SD2
DFN(1.30.8*0.40-0.45)005	QFN(0303*0.75-0.40)024(A)	QFN(0505*0.85-0.40)040(C)-SD2
DFN(1.30.8*0.40-0.45)006	QFN(0303*0.75-0.40)024(A)-SD2	QFN(0505*0.85-0.40)040(D)
DFN(1.300.66*0.30-0.82)004(A)	QFN(0303*0.75-0.40)024(A)-SS2	QFN(0505*0.85-0.40)040(D)-SD2
DFN(1.41.4*0.37-0.50)006(A)	QFN(0303*0.75-0.50)012	QFN(0505*0.85-0.40)040(D)-SIP
DFN(1.41.4*0.40-0.50)006(A)	QFN(0303*0.75-0.50)012(B)	QFN(0505*0.85-0.40)040(E)-SS5
DFN(1.41.4*0.40-0.50)006(B)	QFN(0303*0.75-0.50)012-SS2	QFN(0505*0.85-0.40)040(F)-SD2
DFN(1.41.5*0.30-0.70)002(A)	QFN(0303*0.75-0.50)016	QFN(0505*0.85-0.40)040(F)-SIP
DFN(1.41.8*0.40-0.50)006(A)	QFN(0303*0.75-0.50)016(B)	QFN(0505*0.85-0.40)040(G)-SD2
DFN(1.51.0*0.50-0.50)006(A)	QFN(0303*0.75-0.50)016(E)	QFN(0505*0.85-0.40)040(H)-SD2
DFN(1.51.0*0.55-0.50)006(A)	QFN(0303*0.75-0.50)016(E)-SD2	QFN(0505*0.85-0.40)040-SD2
DFN(1.51.0*0.75-0.50)006	QFN(0303*0.75-0.50)016(E)-SS2	QFN(0505*0.85-0.40)040-SD3
DFN(1.51.0*0.75-0.50)006 B	QFN(0303*0.75-0.50)016(E)-SS3	QFN(0505*0.85-0.40)040-SS2
DFN(1.51.0*0.85-0.50)006(A)	QFN(0303*0.75-0.50)016(F)	QFN(0505*0.85-0.40)040-SS3
QFN(0505*0.85-0.40)042(B)	QFN(0808*0.85-0.40)064(C)	
QFN(0505*0.85-0.45)036(A)-SIP	QFN(0808*0.85-0.40)064(C)-SD2	
QFN(0505*0.85-0.50)028	QFN(0808*0.85-0.40)064(C)-SD3	
QFN(0505*0.85-0.50)028	QFN(0808*0.85-0.40)064(C)-SIP	

Test Report

No.: CANEC24007499103

Date: Apr 29, 2024

Page 21 of 32

QFN(0505*0.85-0.50)032(N)-SS3	QFN(0808*0.85-0.40)068-SD2
QFN(0505*0.85-0.50)032(O)-SS3	QFN(0808*0.85-0.40)068-SD3
QFN(0505*0.85-0.50)032-SD2	QFN(0808*0.85-0.40)068-SIP
QFN(0505*0.85-0.50)032-SD3	QFN(0808*0.85-0.40)072(A)-SIP
QFN(0505*0.85-0.50)032-SIP	QFN(0808*0.85-0.50)051(A)-SIP
QFN(0505*0.85-0.50)032-SS2	QFN(0808*0.85-0.50)051(A)-WET
QFN(0505*0.85-0.50)032-WET	QFN(0808*0.85-0.50)056
QFN(0505*0.85-0.65)020	

Test Report

No.: CANEC24007499103

Date: Apr 29, 2024

Page 23 of 32

QFN(0606*0.55-0.30)068(A)	QFN(0909*0.75-0.50)064(I)
QFN(0606*0.55-0.30)068(A)-SS2	QFN(0909*0.75-0.50)064(K)
QFN(0606*0.55-0.35)056	QFN(0909*0.75-0.50)064(K)-WET
QFN(0606*0.55-0.35)056(B)	QFN(0909*0.75-0.50)064(L)
QFN(0606*0.55-0.35)056(B)-SD2	QFN(0909*0.75-0.50)064-WET
QFN(0606*0.55-0.35)056(B)-SS2	QFN(0909*0.75-0.50)-3D064(C)
QFN(0606*0.55-0.35)056-SS2	QFN(0909*0.85-0.35)088(A)
QFN(0606*0.55-0.35)060(A)	QFN(0909*0.85-0.35)088(A)-SD2
QFN(0606*0.55-0.35)060(A)-SD2	QFN(0909*0.85-0.35)088(A)-SS2
QFN(0606*0.55-0.35)060(A)-SS2	QFN(0909*0.85-0.35)088(D)
QFN(0606*0.55-0.35)060(B)	QFN(0909*0.85-0.35)088(D)-SD2
QFN(0606*0.55-0.35)060(B)-SS2	QFN(0909*0.85-0.35)088(D)-SS2
QFN(0606*0.55-0.40)048	QFN(0909*0.85-0.35)088(E)-SIP
QFN(0606*0.55-0.40)048-SD2	QFN(0909*0.85-0.35)088(E)-SS2
QFN(0606*0.55-0.40)048-SS2	QFN(0909*0.85-0.4)076-SD2
QFN(0606*0.55-0.40)052	QFN(0909*0.85-0.40)076
QFN(0606*0.55-0.40)052-SS2	QFN(0909*0.85-0.40)076(C)
QFN(0606*0.67-0.40)044(B)	QFN(0909*0.85-0.40)076(C)-SS2
QFN(0606*0.75-0.35)056	QFN(0909*0.85-0.40)076(D)
QFN(0606*0.75-0.35)056(E)	QFN(0909*0.85-0.40)076(E)
QFN(0606*0.75-0.35)056-SD2	QFN(0909*0.85-0.40)076(F)-SS2
QFN(0606*0.75-0.35)056-SIP	QFN(0909*0.85-0.40)076-SD2
QFN(0606*0.75-0.35)056-SS2	QFN(0909*0.85-0.40)076-SD3
QFN(0606*0.75-0.40)044(A)	QFN(0909*0.85-0.40)00868.98 15 reW* i

Test Report

No.: CANEC24007499103

Date: Apr 29, 2024

Page 24 of 32

QFN(0606*0.75-0.40)052	QFN(0909*0.85-0.50)064(G)
QFN(0606*0.75-0.40)052(B)-SS3	QFN(0909*0.85-0.50)064(J)
QFN(0606*0.75-0.40)052(B)-SS4	QFN(0909*0.85-0.50)064(K)
QFN(0606*0.75-0.40)052(B)-SS5	QFN(0909*0.85-0.50)064(M)
QFN(0606*0.75-0.40)052(C)	QFN(0909*0.85-0.50)108(A)
QFN(0606*0.75-0.40)052-SD2	QFN(0909*0.85-0.606*0.75)

Test Report

No.: CANEC24007499103

Date: Apr 29, 2024

Page 25 of 32

QFN(0606*0.85-0.35)056-SD2	QFN(1.51.5*0.55-0.50)006(A)
QFN(0606*0.85-0.35)056-SD3	QFN(1.61.6*0.30-0.40)012
QFN(0606*0.85-0.35)056-SIP	QFN(1.61.6*0.75-0.40)012
QFN(0606*0.85-0.35)060(A)	QFN(1.651.65*0.50-0.35)016(A)
QFN(0606*0.85-0.35)060(A)-SD2	QFN(1.82.6*0.55-0.40)016(A)
QFN(0606*0.85-0.35)060(A)-SIP	QFN(10.310.3*2.75-1.00)024(A)-SIP
QFN(0606*0.85-0.35)060(A)-SS2	QFN(1010*0.75-0.35)096
QFN(0606*0.85-0.40)047(A)-SIP	QFN(1010*0.75-0.35)096(B)
QFN(0606*0.85-0.40)048	QFN(1010*0.75-0.35)096 B)
QFN(0606*0.85-0.40)048(D)	QFN(1010*0.75-0.35)096(B)-SD2
QFN(0606*0.85-0.40)048(D)-SD2	QFN(1010*0.75-0.35)096(B)-SS2
QFN(0606*0.85-0.40)048(E)	QFN(1010*0.75-0.35)096-SD2
QFN(0606*0.85-0.40)048(E)-SD2	QFN(1010*0.75-0.35)096-SIP
QFN(0606*0.85-0.40)048(F)	QFN(1010*0.75-0.40)088
QFN(0606*0.85-0.40)048(F)-SD2	QFN(1010*0.75-0.40)088(B)
QFN(0606*0.85-0.40)048(F)-SD3	QFN(1010*0.75-0.40)088(C)
QFN(0606*0.85-0.40)048(F)-SIP	QFN(1010*0.75-0.40)088(C)-SS2
QFN(0606*0.85-0.40)048(F)-SS2	QFN(1010*0.75-0.40)088(E)
QFN(0606*0.85-0.40)048(G)	

Test Report

No.: CANEC24007499103

Date: Apr 29, 2024

Page 26 of 32

QFN(0606*0.85-0.50)036-SS2	QFN(1010*0.85-0.40)088(D)-SD2
QFN(0606*0.85-0.50)040	QFN(1010*0.85-0.40)088(D)-SIP
QFN(0606*0.85-0.50)040(D)	QFN(1010*0.85-0.40)088(E)
QFN(0606*0.85-0.50)040(E)	QFN(1010*0.85-0.40)088(E)-SD2
QFN(0606*0.85-0.50)040(E)-SD2	QFN(1010*0.85-0.40)088(E)-SD3
QFN(0606*0.85-0.50)040(F)	QFN(1010*0.85-0.40)088(E)-SS2
QFN(0606*0.85-0.50)040-SS2	QFN(1010*0.85-0.40)088-SD2
QFN(0606*0.85-0.50)040-SS4	QFN(1010*0.85-0.40)088-SIP
QFN(0606*0.85-0.65)028(A)	QFN(1010*0.85-0.40)088-SS2
QFN(0606*0.90-0.35)056	QFN(1010*0.85-0.40)088-SS3
QFN(0606*0.90-0.35)056(C)	QFN(1010*0.85-0.50)052(A)-SS3
QFN(0606*0.90-0.35)056-SD2	QFN(1010*0.85-0.50)072
QFN(0606*0.90-0.40)048	QFN(1010*0.85-0.50)072(B)
QFN(0606*0.90-0.40)048(F)-SD2	QFN(1010*0.85-0.50)072(B)-SS2
QFN(0606*0.90-0.40)048-SD2	QFN(1010*0.85-0.50)072(C)
QFN(0606*0.90-0.40)048-SD3	QFN(1010*0.85-0.50)072(D)
QFN(0606*0.90-0.40)048-SIP	QFN(1010*0.85-0.50)116(A)-SS2
QFN(0606*0.90-0.40)048-SS2	QFN(1010*0.85-0.50)116(B)
QFN(0606*0.90-0.40)052-SD2	QFN(1010*0.85-0.50)132(A)
QFN(0606*0.90-0.40)052-SD3	QFN(1010*0.85-0.50)132(B)
QFN(0606*0.90-0.40)052-SIP	QFN(1010*0.85-0.50)132(B)-SIP
QFN(0606*0.90-0.50)036	QFN(1010*0.90-0.35)096
QFN(0606*0.90-0.50)036(B)	QFN(1010*0.90-0.35)096(B)
QFN(0606*0.90-0.50)040	QFN(1010*0.90-0.35)096(B)-SD2
QFN(0606*0.90-0.50)040(E)-SD2	QFN(1010*0.90-0.35)096(B)-SD3
QFN(0606*0.90-0.70)028(A)	QFN(1010*0.90-0.35)096(C)-SIP
QFN(0606*0.90-0.70)028(A)-SS4	QFN(1010*0.90-0.35)096-SD2
QFN(0606*0.90-0.70)028(A)-SS6	QFN(1010*0.90-0.35)096-SD3
QFN(0606*1.15-0.40)048	QFN(1010*0.90-0.35)096-SD4
QFN(0608*0.85-0.35)060(A)-SIP	QFN(1010*0.90-0.35)096-SIP
QFN(0609*1.00-1.30)008(A)-SS3	QFN(1010*0.90-0.40)088
QFN(0609*1.00-1.30)008(A)-SS7	QFN(1010*0.90-0.40)088(D)
QFN(0610*0.90-0.71)036(A)-SS5	QFN(1010*0.90-0.40)088(D)-SD2
QFN(0707*0.50-0.40)056	QFN(1010*0.90-0.40)088-SD2
QFN(0707*0.55-0.35)068	QFN(1010*0.90-0.40)088-SD3
QFN(0707*0.55-0.35)068-SS2	QFN(1010*0.90-0.40)088-SIP
QFN(0707*0.55-0.50)048(Q)	QFN(1010*0.90-0.40)088-SS3
QFN(0707*0.55-0.50)048(Q)-SD2	QFN(1010*0.90-0.50)072(D)
QFN(0707*0.75-0.35)029	QFN(1010*1.15-0.40)088
QFN(0707*0.75-0.35)064(A)-SD2	QFN(1010*1.15-0.40)088(B)-SIP

Test Report

No.: CANEC24007499103

Date: Apr 29, 2024

Page 27 of 32

QFN(0707*0.75-0.35)064(A)-SIP	QFN(1111*0.65-0.40)072
QFN(0707*0.75-0.35)064(A)-SS2	QFN(12.312.3*0.85-0.35)128(A)
QFN(0707*0.75-0.35)068	QFN(12.312.3*0.85-0.35)128(A)-SD2
QFN(0707*0.75-0.35)068-SD2	QFN(12.312.3*0.85-0.35)128(A)-SIP
QFN(0707*0.75-0.35)068-SIP	QFN(12.312.3*0.85-0.35)128(A)-SS2
QFN(0707*0.75-0.35)068-SS2	QFN(12.312.3*0.85-0.35)128(B)
QFN(0707*0.75-0.40)056	

Test Report

No.: CANEC24007499103

Test Report

No.: CANEC24007499103

Date: Apr 29, 2024

Page 30 of 32

QFN(0808*0.75-0.35)080(A)

QFN(5.507*0.75-0.40)050(C)

QFN(0808*0.75-0.35)080(A)-SD2

Test Report

No.: CANEC24007499103

Date: Apr 29, 2024

Page 31 of 32

QFN(0808*0.85-0.35)080(A)-SIP

XWFN(4.24.2*0.55-0.35)042(A)-SD2

QFN(0808*0.85-0.40)064

XWFN(4.24.2*0.75-0.35)042(A)-SD2

QFN(0808*0.85-0.40)064(B)

XWFN(5.55.5*0.90-0.40)040(A)-SS2

